



CONDOR® SCC-4000 FLOOR ADAPTOR (SCFA) USER INSTRUCTION MANUAL

STOP! WARNING: READ THIS FIRST!

First Read and Understand the Instruction manual and product labels for important safety, set-up and troubleshooting information. If you have problems setting up or using the Condor® Scooter Chock Floor Adaptor, contact customer service @ 1-815-754-7418 or contact us via e-mail @ www.condor-lift.com. The Condor® Scooter Chock Floor Adaptor is not intended for use by children.

Assembly Instructions: Remove all parts from shipping box. Check the parts below to make sure you have all the parts needed to assemble your Condor® Scooter Chock Floor Adaptor before beginning. In the unlikely event that you find a part damaged or missing, please call customer service @ #1-815-754-7418.

Parts	Key	Qty.	Description
	A	2	Condor® Boomerang Bar (SC-VSTRIP-C)
	B	4	5/16"-18 X 1/2" Button Head Cap Screw (WSL-94067)

Assembly Illustration:

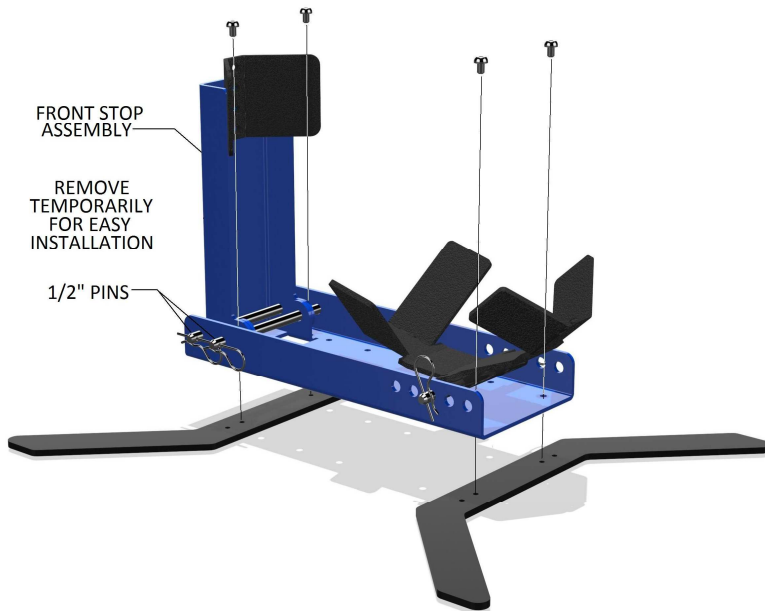


Figure 1

Warning: Only use unit when properly assembled.

Step1: Remove Front Stop assembly by taking out the two 1/2" pins in the front of the unit.

Step2: Align inside holes of the Boomerang Bar (A) with the holes on the ends of the base as shown in the Figure2.

Step3: Secure the Boomerang Bar with the provided Button head cap screws (B) and tighten completely with the supplied hex key. (Figure1)

Step4: Re-attached Front Stop assembly and place the unit on a flat, clean surface.

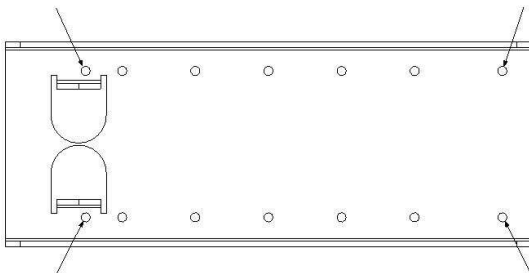


Figure 2

CAUTION:

Always make sure that all fasteners are tight and all pins are in place prior to use. Understand the limitations of this product and do not exceed these limitations. Always make sure that the unit's cradle settings are optimum for the tire size of the motorcycle before use. If instructions are not clear, additional information is available at www.condor-lift.com or call 1-800-461-1344. Technical Components Development & Design, Inc. is not responsible for any damage incurred by exceeding this product's limitations in structure and/or functionality.

One Year Limited Warranty:

This Condor® Scooter Chock Floor Adaptor product warranty extends to the original consumer purchaser of the product. All illustrations and specifications contained in this manual are based on the latest product information available at the time of printing. Technical Components Development & Design, Inc. reserves the right to make changes at any time, without notice, in color, materials, equipment, options, specifications and models. Models may be shown with optional equipment. Further information may be obtained by contacting Technical Components Development & Design, Inc. @ #1-815-754-7418.

Warranty Duration:

This product is warranted to the original consumer purchase for a period of one (1) year from original purchase date.

What is not covered:

Our warranty for your product will not cover the abnormal wear of parts, damage resulting from negligent use or misuse of the product, use contrary to operating instructions, or disassembly, repair or alteration by any person other than an authorized service station. We shall not be liable for any incidental or consequential damages for breach of by express or implied warranty on your product.

Return Policy:

15 day return policy applies. Merchandise may be returned within 15 days of purchase. Merchandise must be unused and in its original packaging. Customer will call TC Development for a Return Authorization number. Customer pays for freight return. Credit is given upon inspection of returned goods. A 15% re-stocking fee applies to all returned merchandise.

How your state's law may apply:

Some states do not allow limitations on how long any implied warranty lasts or the exclusion or limitation of incidental or consequential damages. So the above limitation may not apply to you. This warranty gives you specific legal rights, and you may also have other rights, which may vary from state to state.

Thank you for purchasing the Condor® Scooter Chock Floor Adaptor.

Patent Number: RE 42,735

Condor® is a trademark of Technical Components Development & Design, Inc.

The Condor® Scooter Chock Floor Adaptor is US Patented & International Patent Pending.

210 W. Stephenie Drive
Cortland, IL 60112
Phone: (815) 754-7418
Fax: (815) 754-7419
Web Site: www.condor-lift.com

checked by _____